

Sand Air

Pocci + Dondoli, 2003

Ultralight, comfortable and sophisticated mesh enhances the unique characteristics that have made the Sand design famous. The PVC-coated nylon mesh ensures excellent breathability.



Sand Air

Stacking chair with or without armrests, die-cast aluminium frame. Seat and back in mesh made of polyester thread covered with PVC (Sand Air) and PVC + hemp (Sand Air Canatex / Duo) in different colours. Lacquered frame versions also available for outdoor use. The barstool (not stackable) has the same characteristics as the chair.



Sand Air

width 47 cm
depth 54 cm
total height 82 cm
seat height 45 cm



Sand Air stool

width 47 cm
depth 54 cm
total height 99 cm
seat height 64 cm



Sand Air high stool

width 47 cm
depth 54 cm
total height 115 cm
seat height 80 cm



Sand Air with armrest

width 53,5 cm
depth 54 cm
total height 82 cm
seat height 45 cm
arm rest height 63 cm



Sand Air stool with armrest

width 53,5 cm
depth 54 cm
total height 99 cm
seat height 64 cm
arm rest height 82 cm

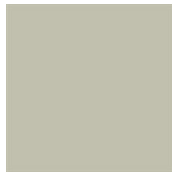


Sand Air high stool with armrest

width 53,5 cm
depth 54 cm
total height 115 cm
seat height 80 cm
arm rest height 98 cm

Structure

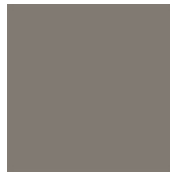
Lacquers



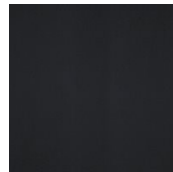
B13 MATT SABBIA



B22 BUNGEE BUNGEE BROWN



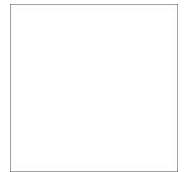
B41 TORTORA



B42 GRAFITE



B59 MATT BLACK

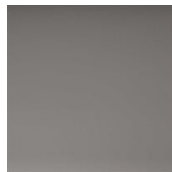


B62 MATT WHITE

Metals



A08 ALLUMINIO LUCIDO



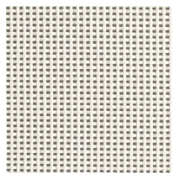
A18 OSSIDIANA OPACO



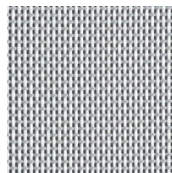
A27 TITANIUM

Seat

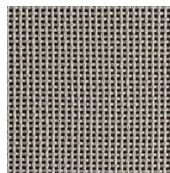
Net



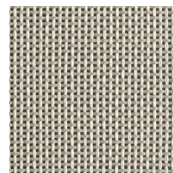
S03 BIANCO



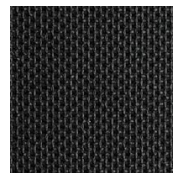
S07 MELANGE



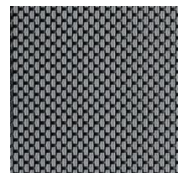
S21 CANATEX TORTORA



S22 CANATEX SABBIA



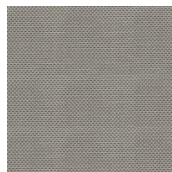
S24 CANATEX NERO



S27 GRIGIO PIOMBO



S28 GRIGIO GHISA



S30 CANATEX MARRONE MEDIO